

## Warfield Village

1	General
<p>Incorporated in 1952, Warfield has a total land area of 1.9 square km (2006 Census). The Village adjoins the western boundary of Trail. Warfield is in the Kootenay-Boundary Regional District.</p>	

2					Population Estimates					Age Distribution				
Annual Estimates					2011 Census					% Distribution, 2011 *				
Year	Warfield	% Change Prev. Year	BC	% Change Prev. Year	Warfield	Male	Female	Warfield	BC					
					All ages	825	880	100.0	100.0					
2007	1,794	n/a	4,309,632	n/a	0 - 14	135	145	16.5	15.4					
2008	1,799	0.3	4,384,047	1.7	15 - 24	95	95	11.2	12.6					
2009	1,813	0.8	4,459,947	1.7	25 - 44	190	190	22.4	26.3					
2010	1,808	-0.3	4,529,647	1.6	45 - 64	280	295	33.8	30.0					
2011	1,801	-0.4	4,573,321	1.0	65 +	130	155	16.5	15.7					

Source: Statistics Canada (as of July 1, includes estimate of Census undercount)

\* based on published totals, both sexes

2006 Census Profiles can be found on our Website at <http://www.bcstats.gov.bc.ca/census.asp>

3							Selected Census Characteristics						
							Warfield			British Columbia			
Characteristics	2001	2006	% Change	% Change	2001	2006							
Population	1,739	1,729	- 0.6	5.3	3,907,738	4,113,487							
Population (by citizenship)	1,740	1,720	- 1.1	5.3	3,868,875	4,074,385							
Non-immigrant	1,525	1,430	- 6.2	2.9	2,821,870	2,904,240							
Immigrant	205	285	39.0	10.8	1,009,820	1,119,215							
Labour force (15+ yrs.)	900	970	7.8	8.1	2,059,950	2,226,380							
Employees	840	885	5.4	9.2	1,715,600	1,873,050							
Self-employed	40	80	100.0	7.4	291,455	313,000							
Participation rate [ppt.=percentage points]	64.7%	67.6%	2.9 ppt.	0.4 ppt.	65.2%	65.6%							
Unemployment rate	5.0%	5.2%	0.2 ppt.	-2.5 ppt.	8.5%	6.0%							
Total population 25 to 64 years	920	960	4.3	6.5	2,144,050	2,284,465							
No certificate, diploma or degree	140	35	- 75.0	- 40.1	471,470	282,200							
High school certificate or equivalent	155	330	112.9	27.7	462,925	591,275							
Apprenticeship/trades certificate or diploma	245	180	- 26.5	- 7.4	295,180	273,450							
College, CEGEP or other cert. or diploma	230	200	- 13.0	11.3	401,760	447,005							
University certificate, diploma or degree	150	215	43.3	34.7	512,715	690,535							
Bachelor's degree	70	100	42.9	23.0	282,800	347,715							
Census families	490	485	- 1.0	6.9	1,086,030	1,161,420							
Lone-parent families	50	60	20.0	4.0	168,420	175,165							
Households	750	750	-	7.1	1,534,335	1,643,150							
1-family households	490	485	- 1.0	6.1	1,012,925	1,074,850							
Multi-family households	-	-	-	18.4	35,050	41,510							
Non-family households	260	260	-	8.3	486,355	526,785							
Median Income (2000 & 2005)	\$ 26,601	\$ 27,077	1.8	12.5	\$ 22,095	\$ 24,867							
Males	\$ 42,233	\$ 32,459	- 23.1	9.0	\$ 28,976	\$ 31,598							
Females	\$ 16,532	\$ 21,567	30.5	14.0	\$ 17,546	\$ 19,997							
Median Family Income (2000 & 2005)	\$ 64,176	\$ 64,384	0.3	20.0	\$ 54,840	\$ 65,787							
Economic Families	485	485	-	6.5	1,044,850	1,112,810							
2001 Incidence, low income	-	8.2%	8.2 ppt.	-0.6 ppt.	13.9%	13.3%							
2006 Prevalence, low income	-	8.2%	8.2 ppt.	-0.6 ppt.	13.9%	13.3%							
Unattached persons, 15+	270	295	9.3	4.7	576,825	603,880							
Incidence, low income	33.6%	20.3%	-13.3 ppt.	-1.4 ppt.	38.1%	36.7%							
Population in private hh.	1,735	1,720	- 0.9	5.1	3,785,270	3,978,215							
Incidence, low income	8.3%	11.9%	3.6 ppt.	-0.5 ppt.	17.8%	17.3%							
Dwellings	750	745	- 0.7	7.1	1,534,335	1,643,150							
Owned	610	625	2.5	12.5	1,017,485	1,145,045							
Rented	140	120	- 14.3	- 3.6	512,360	493,995							
Average gross rent	\$ 489	\$ 567	16.0	10.4	\$ 750	\$ 828							
Average owners' payments	\$ 631	\$ 651	3.2	17.1	\$ 904	\$ 1,059							
Avg. value, owned dwell.	\$ 109,231	\$ 160,522	47.0	81.5	\$ 230,645	\$ 418,703							

Source: Statistics Canada. Notes: incomes are for 2005 and 2000; rent/owner's payments are restricted to non-farm, non-reserve private dwellings.

## Warfield Village

4		Labour Force by Industry (NAICS)					
		Warfield			BC	% Distribution, 2006	
Industry		2001	2006	% Change	% change	Warfield	BC
Total labour force		900	970	7.8	8.1	100.0	100.0
Industry - Not applicable		25	-	- 100.0	- 26.6	-	1.5
<b>All industries (Experienced LF)</b>		875	970	10.9	8.9	100.0	98.5
111-112 Farms		-	-	-	5.2	-	1.8
113 Forestry and logging		-	-	-	- 10.0	-	1.0
114 Fishing, hunting and trapping		-	-	-	1.3	-	0.2
1151/2 Support activities for farms		-	-	-	11.3	-	0.1
1153 Support activities for forestry		-	-	-	- 21.5	-	0.3
21 Mining and oil and gas extraction		15	-	- 100.0	42.6	-	0.9
22 Utilities		15	25	66.7	- 3.4	2.6	0.5
23 Construction		45	65	44.4	39.9	6.7	7.5
31-33 Manufacturing		205	115	- 43.9	- 2.7	11.9	8.5
311 Food manufacturing		-	-	-	3.6	-	1.0
321 Wood product manufacturing		15	10	- 33.3	- 16.1	1.0	1.7
322 Paper manufacturing		10	-	- 100.0	- 13.5	-	0.6
41 Wholesale trade		10	10	-	11.6	1.0	4.1
44-45 Retail trade		85	125	47.1	6.9	12.9	11.2
441 Motor vehicle and parts dealers		-	-	-	9.0	-	1.1
445 Food and beverage stores		15	25	66.7	8.4	2.6	2.9
448 Clothing & clothing accessories		20	-	- 100.0	9.2	-	1.1
452 General merchandise stores		-	25	-	6.5	2.6	1.2
48-49 Transportation & warehousing		25	30	20.0	0.6	3.1	5.2
51 Information and cultural industries		20	10	- 50.0	- 5.3	1.0	2.6
52 Finance and insurance		15	40	166.7	4.5	4.1	3.8
53 Real estate & rental/leasing		-	-	-	22.1	-	2.3
54 Prof'sonal, scientific & tech. serv.		-	30	-	18.6	3.1	7.3
55 Mgmt. of companies/ent'prises		-	-	-	126.6	-	0.1
56 Admin+support, waste mgmnt srv.		55	30	- 45.5	20.4	3.1	4.4
61 Educational services		55	25	- 54.5	9.2	2.6	6.9
62 Health care and social assistance		160	165	3.1	6.5	17.0	9.6
71 Arts, entertainment and recreation		-	25	-	11.3	2.6	2.3
72 Accommodation and food services		50	155	210.0	7.7	16.0	8.1
721 Accommodation services		30	100	233.3	2.5	10.3	1.7
722 Food services & drinking places		20	55	175.0	9.2	5.7	6.4
81 Other services (excl. public admin.)		50	50	-	11.8	5.2	4.9
91 Public administration		60	60	-	- 2.0	6.2	5.0
Special Aggregations	Agriculture, Food and Beverage	-	-	-	5.8	-	2.9
	Fishing and Fish Processing	-	-	-	- 3.3	-	0.5
	Logging and Forest Products	25	10	- 60.0	- 14.7	1.0	3.7
	Mining and Mineral Products	190	90	- 52.6	17.1	9.3	2.1

Source: Statistics Canada. Industry according to NAICS version used in each census. Unpublished data.

5		Business Locations- Number of Firms by Employment Size Range								
		Firms with no employees		Firms with employees		% change		Koot-Bound RD		
		Koot-Bound RD	BC	Koot-Bound R	BC	Koot-Bound RD	1 to 19	20 to 49	50-199	200 Plus
2008		1,030	185,879	1,092	175,003	-	968	83	33	8
2009		1,036	186,541	1,157	176,124	6.0	1,035	78	36	8
2010		1,083	194,349	1,192	175,913	3.0	1,070	77	39	6
2011		1,084	195,290	1,185	173,589	- 0.6	1,061	81	36	7

Source: Business Register, Statistics Canada. In some areas, boundary changes/geocoding changes may cause large changes.

6		Municipal Residential Taxes and Charges on a Representative House					
		Warfield					
		House Value		Taxes & Charges			
Year		\$	% change	\$	% change		
2008		207,804		2,676			
2009		210,151	1.1	2,671	-0.2		
2010		209,504	-0.3	2,791	4.5		
2011		206,061	-1.6	2,754	-1.3		
2012		208,311	1.1	2,890	5.0		

Year	House Value	Taxes & Charges
2008	100	2,676
2009	101	2,671
2010	100	2,791
2011	99	2,754
2012	101	2,890

Source: Ministry of Community, Sport & Cultural Development [http://www.cd.gov.bc.ca/lgd/infra/statistics\\_index.htm](http://www.cd.gov.bc.ca/lgd/infra/statistics_index.htm) (No RD level figures)

## Warfield Village

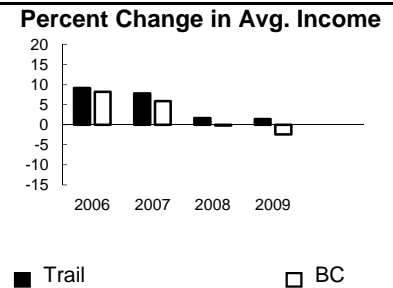
7	Values of Building Permits									
	Residential					Non-Residential		Total		Year
	Number of Units		Value \$'000			Value \$'000		Value \$'000		
Warfield	BC	Warfield	BC	Warfield	BC	Warfield	BC			
2007	9	40,932	3,009	8,611,723	5	3,932,968	3,014	12,544,691	2007	
2008	2	30,110	863	6,899,289	12	3,677,866	875	10,577,155	2008	
2009	2	18,607	769	4,491,075	-	3,138,810	769	7,629,885	2009	
2010	-	28,984	229	6,705,888	-	3,017,921	229	9,723,809	2010	
2011	-	25,745	290	6,113,406	95	3,136,361	385	9,249,767	2011	

Source: Statistics Canada

Note: Detailed non-residential permits data can be found on our Website: www.bcstats.gov.bc.ca

A dash can indicate a nil report, a value of less than \$500, or non-reporting. P indicates 'preliminary'.

8	Personal Taxation Statistics						Percent Change in Avg. Income	
	Total Income of All Returns							
	All Returns (number)		Average Income (\$)		% Change avg. income			
Year	Trail	BC	Trail	BC	Trail	BC		
2005	7,830	3,154,090	32,323	35,601	n/a	n/a		
2006	7,790	3,165,750	35,289	38,523	9.2	8.2		
2007	7,980	3,287,750	38,034	40,802	7.8	5.9		
2008	7,990	3,383,640	38,658	40,736	1.6	-0.2		
2009	7,970	3,406,860	39,203	39,754	1.4	-2.4		

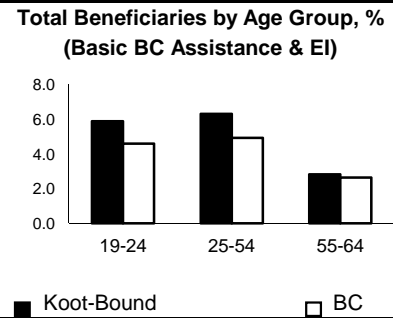


Taxation data available at: <http://www.bcstats.gov.bc.ca/data/dd/income.asp>

9	Source of Total Income 2009				% Distribution, Total Income													
	Trail		BC															
	\$Thousands	% of Total	% of Total															
Employment	190,593	61.0	63.7	Employment	60	65	Investment	5	10	Self-Emply'd	2	5	Other	10	15	Tax Exempt	2	5
Pension	70,943	22.7	13.8	Pension	20	15												
Investment	16,719	5.4	9.8															
Self-Employed	8,295	2.7	5.3															
Other	17,964	5.7	5.3															
Tax Exempt	7,928	2.5	2.0															
Total	312,448	100.0	100.0															

Source: Canada Revenue Agency. Areas are defined by postal codes and may not match municipal boundaries.  
Note: Data is for Trail

9	Dependency on the Safety Net						Total Beneficiaries by Age Group, % (Basic BC Assistance & EI)		
	Percentage of Population by Age Receiving Benefits - September 2009								
	Age Group	BC Basic* Income Assistance Recipients (%)		Employment Insurance Beneficiaries (%)		Total of BC Basic Income Assistance & EI Beneficiaries (%)			
Koot-Bound		BC	Koot-Bound	BC	Koot-Bound	BC			
Under 19	3.0	2.7							
19-24	2.2	2.1	3.7	2.6	5.9	4.6			
25-54	2.5	1.9	3.9	3.1	6.3	4.9			
55-64	0.9	0.7	1.9	2.0	2.8	2.6			
19-64	2.0	1.7	3.3	2.8	5.3	4.4			



\* On temporary assistance only. Excluded are those on Continuous Assistance, aboriginals living on reserve, seniors/OAS, & children living with relatives.

Source: BC Stats (using administrative files from the BC Ministry of Housing & Social Development, and Human Resources & Social Development Canada)

Note: EI Beneficiaries reports now include regular, fishing and employment benefits, work sharing and support measures. The reports exclude sickness, maternity and parental benefits.

10	Business Formations and Failures									
	Incorporations				Bankruptcies					
	Number				Trail		Kootenay DR		BC	
Year	Warfield	BC	Year	Business	Consumer	Business	Consumer	Business	Consumer	
2007	-	34,036	2005	2	23	n.a.	n.a.	786	8,168	
2008	-	30,085	2006	1	17	31	224	585	7,020	
2009	1	26,431	2007	0	17	14	197	470	6,651	
2010	-	30,305	2008	0	22	16	180	454	7,293	
2011	2	30,844	2009	1	18	9	339	380	10,639	

Source: BC Ministry of Finance

Source: Office of the Superintendent of Bankruptcy, Government of Canada

Incorporations are counted in municipality of the registered office address which may differ from the actual business location.

Note: Bankruptcy is by urban postal code forward sortation area and is counted where it is filed.